



ezeVue™ Media Manager Download and Installation Guide

Overview	3
Downloading and Installing the software.....	3
Licensing the Software	7
Running The ezeVue™ Media Manager Software	11
Changing the Database Path.....	11
Changing the Content Path	12

Overview

The following document will give instructions on installing the ezeVue™ Media Manager software.

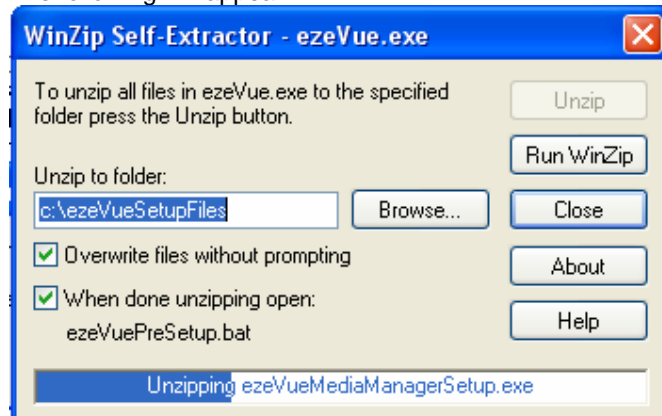
Downloading and Installing the software

The Setup Pack for EzeVue can be downloaded from the EzeVue Website. Go to www.ezevue.com/www/download1.asp Fill in the form and a link will be emailed to you for the software download. When the link is received, click on it and select 'Save'. Save the download and when it is complete, double click on the EzeVue.exe file and follow the instructions on the screen:



Click **OK**.

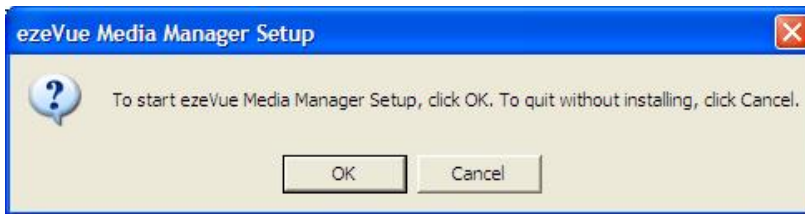
The following will appear:



A Readme File will open. Follow the instruction within to continue.

If you do not wish to download the software, contact EzeVue and request a CD (info@ezevue.com).

Whether downloaded or on CD, first run the **ezeVueMediaManagerSetup.exe** executable program that comes with the installation pack by double clicking on the file in explorer. If you don't already have a copy of the MS.Net framework installed the setup program will do this first. Follow the onscreen prompts to install this. After the MS.Net installation is complete you will see the following screen.

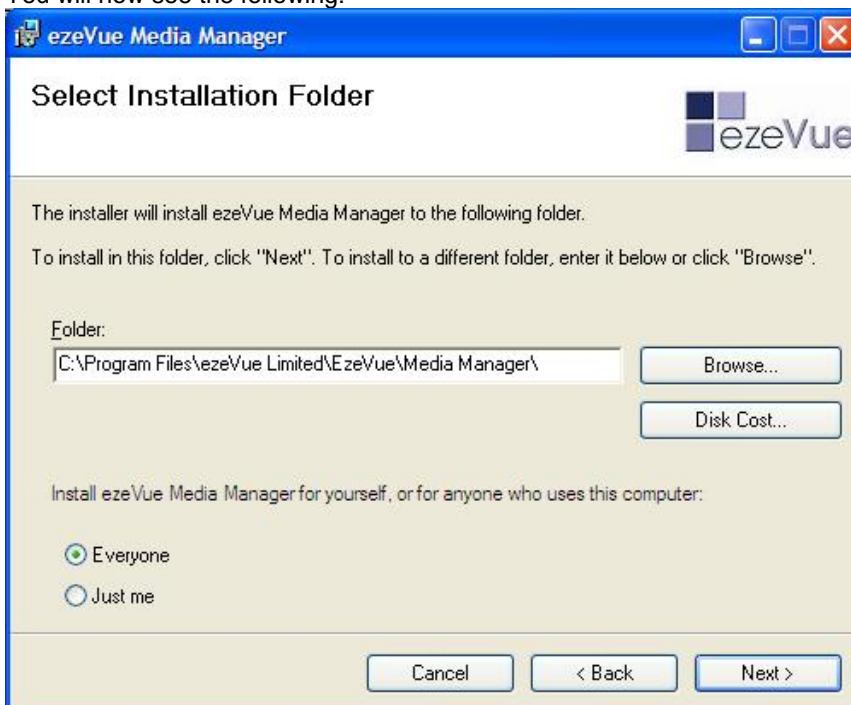


Click the OK button. You will then see the following:



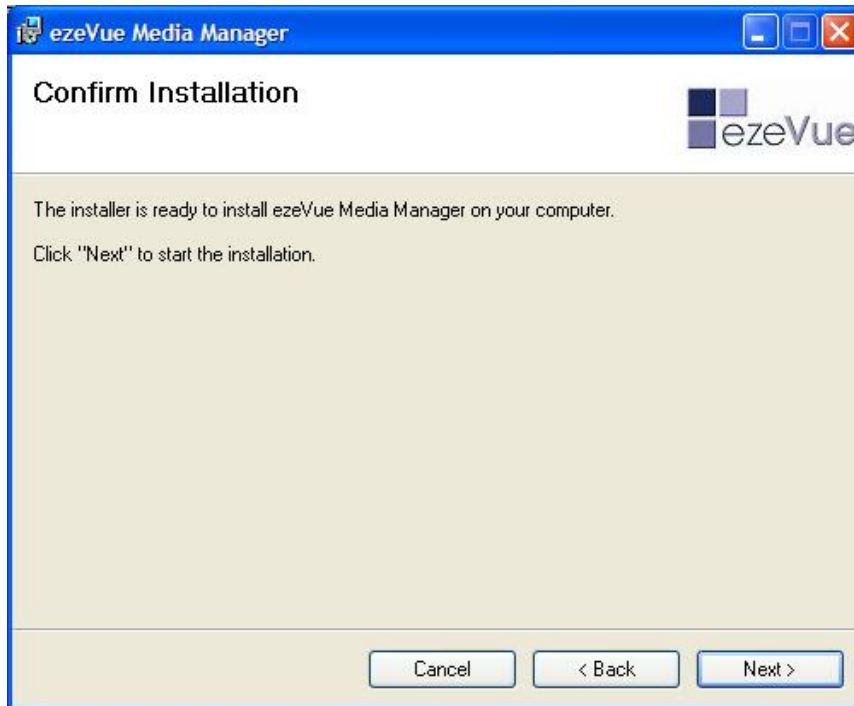
Press **Next** to continue your installation.

You will now see the following:

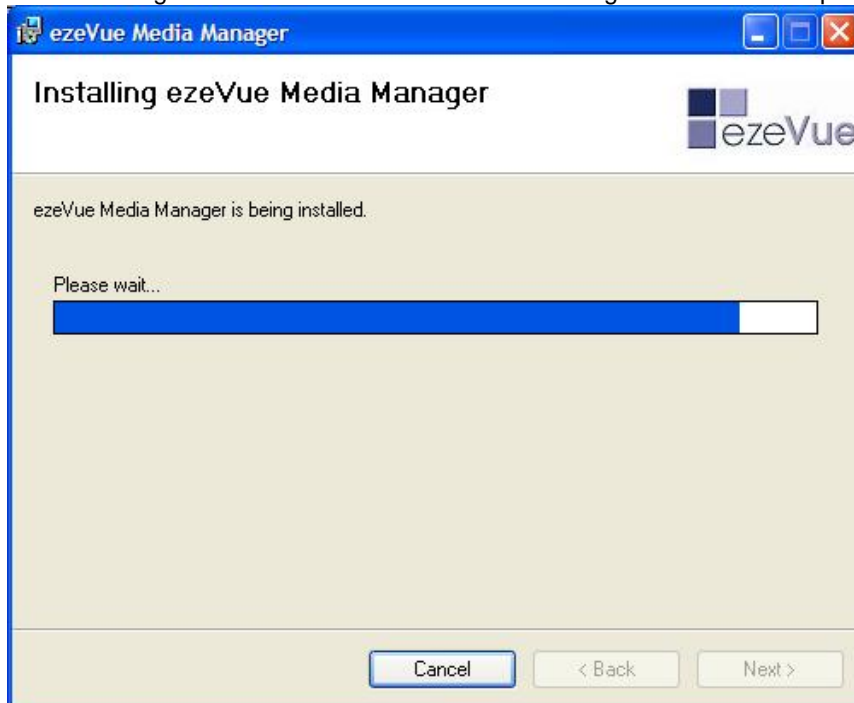


If you are logged in to the only account that will use the ezeVue™ Media Manager then just press **Next** otherwise if you want all users of the machine to be able to run the ezeVue™ Media Manager then select the **Everyone** option.

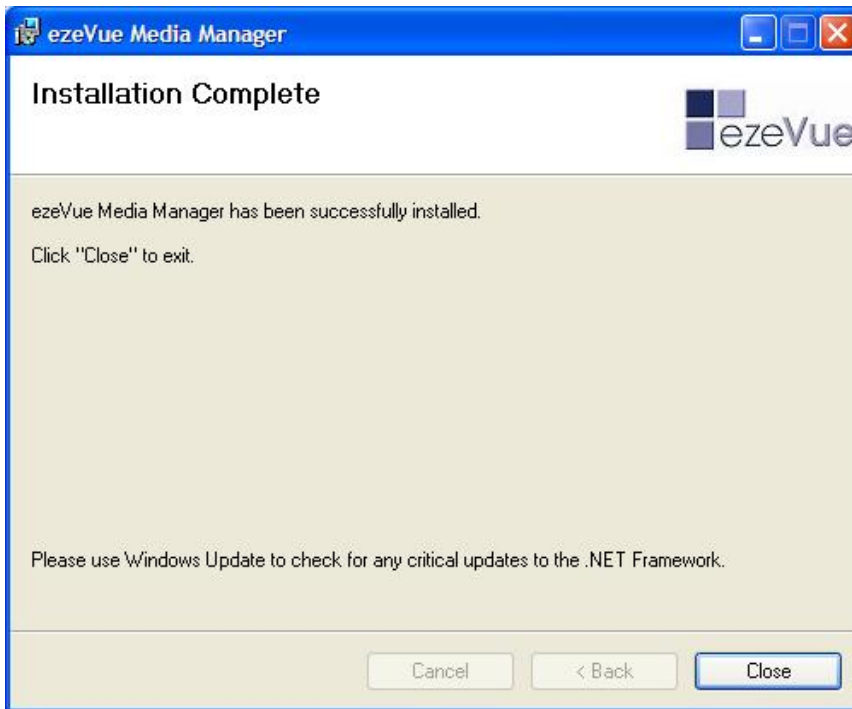
After pressing **Next** you will see the following:



Press **Next** again to install the ezeVue™ Media Manager software. Example Below:



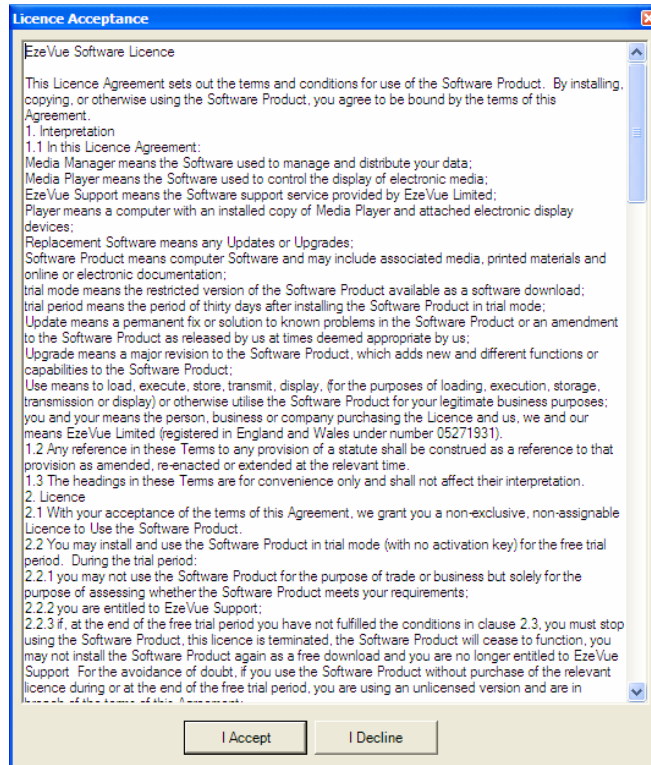
When the software installation process is complete you will see the following:



Press Close and the installer will tell you that the Installation is complete. Reboot the machine before running the system for the first time.

Licensing the Software

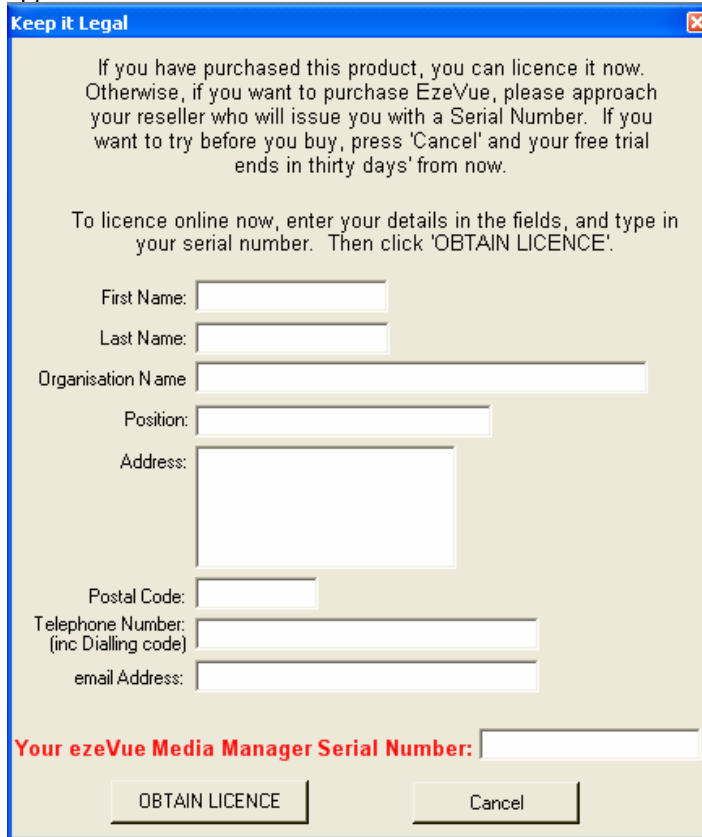
The ezeVue™ Media Manager software is available in Trial mode for 30 days but after that you will need to obtain a license if you wish to continue to use the software. By following the onscreen advice the licensing procedure should be completed fairly quickly. You will be presented with an opportunity to review the License conditions as below when you first start the software.



You will be presented with the option to Decline the License conditions press **I Decline** to do this. If you press **I Decline**, the Software will exit. If you are happy with the conditions press **I Accept**. On accepting the license conditions and depending on whether your PC is connected to the internet or not, you will see the following:

a) Internet Connected

If the machine you have installed on is connected to the internet, the following window will appear:



Keep it Legal

If you have purchased this product, you can licence it now. Otherwise, if you want to purchase EzeVue, please approach your reseller who will issue you with a Serial Number. If you want to try before you buy, press 'Cancel' and your free trial ends in thirty days' from now.

To licence online now, enter your details in the fields, and type in your serial number. Then click 'OBTAIN LICENCE'.

First Name:

Last Name:

Organisation Name:

Position:

Address:

Postal Code:

Telephone Number:
(inc Dialling code)

email Address:

Your ezeVue Media Manager Serial Number:

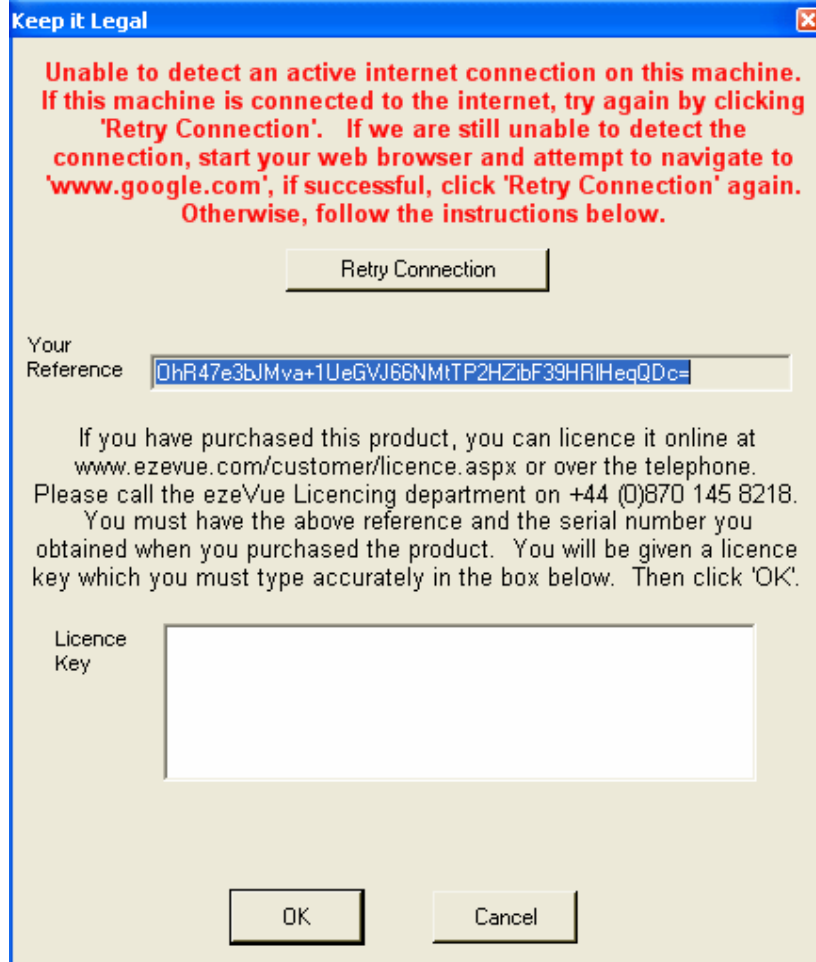
If you have not purchased a Serial Number to licence ezeVue Media Manager, click cancel and you will be able to use the full version of ezeVue Media Manager for a trial period of 30 days.

If you have purchased a Serial Number to licence ezeVue Media Manager, enter your details in the relevant fields. Enter the Serial Number and click **Obtain Licence**. ezeVue Media Manager will now connect to the internet and automatically obtain the Licence Key.

You will then be asked to Login. **(Please turn to Page 11)**

b) Internet not Connected

If the Machine is not connected to the Internet, the following screen will appear:



Make a note of the **Your Reference** Number in the first box or copy and paste it to a text file on a usb memory stick or similar.

On a machine connected to the internet, go to <http://www.ezevue.com/customer/licence.aspx>

The page is shown below. Select 'ezeVue Media Manager' and click OK.



Enter Reference Number saved in the last step, your Serial Number and all your details in the relevant fields and click **Request Licence Key**.

The following screen should appear:



Either Copy and paste the Licence Key into a text file and save it to a USB memory Stick (or similar), or make an accurate note of the licence key.

In the EzeVue Media Manager software, paste or type the Key accurately into the **Licence Key** box and click **OK**.

Running The ezeVue™ Media Manager Software



After licencing, when you run the software by either selecting it from the EzeVue Software programme menu or the Icon (above) that is installed on your windows desktop you will see the login screen. The initial User name and password are both set to 'admin'. It is strongly advised that you change this to something more secure within the administration module after licensing your ezeVue™ Media Manager.

Login Screen Example:



After entering the username and password press login.

Changing the Database Path

Note: This only needs to be done when a database is to be setup on a central server.

For ezeVue™ Media Manager to be able to pick up a database on the server from your desktop client you will need to do the following:

1. Locate the file **ezevueMediaManager.exe.config** within the directory c:\program files\ezevue limited\ezevue\media manager\ on your local machine.
2. Open the configuration file for edit with notepad or another editor.

Within the appsettings section find

```
<add key="dbpath" value="C:\Program Files\ezeVue Limited\EzeVue\Media Manager\" />
```

Change the value to:

```
<add key="dbpath" value="\\<the name of your server>\<the shared folder on the server you wish to store the database>" />
```

Changing the Content Path

Note: This only needs to be done when content is to be setup on a central server.

For ezeVue™ Media Manager to be able to pick up content on a central server from your desktop client you will need to do the following:

1. Locate the file **ezeVueMediaManager.exe.config** within the directory directory c:\program files\ezevue limited\ezevue\media manager\ on your local machine.
2. Open the configuration file for edit with notepad or another editor.

Within the <appsettings> section find

```
<add key="MaxContent" value="c:\ezeVue\ezeVuecontent\" />
```

Change the value to:

```
<add key="MaxContent" value="\\<the name of your server>\<the shared folder on the server you wish to store the content>" />
```